



Newsletter 4  
TERM 2  
15th May 2020

## Baptist Care

### Free Support Sessions for Parents Affected by COVID-19

This is an extraordinary time for us all. Our thoughts are with all those dealing with the impact that COVID 19 is having on our community and the world at large. The potential for emotional and mental stress to parents, children, and families is not to be taken lightly and Baptist Care SA's Family Mental Health Support Services (FMHSS) offers our full support to best navigate these challenges.

Accessing professional support can help process any ongoing emotional duress, and explore ways to cope by developing a toolbox of helpful ideas, healthy perspectives, coping skills and strategies.

Baptist Care SA's FMHSS is currently offering **no obligation and cost free parent/carer/educator support sessions** to all of the parents and staff that belong to the schools and families in our community. No referrals are needed – you can contact us directly to register your interest via email.

There are no criteria or forms to fill in. Once we receive your email we will contact you to organise your free 1 hour parent/carer/educator support session which will be delivered via either video call (preferable) or over the phone session. Please refer the attached fact sheet for more information on how to register.

At the end of the session you can expect to have some practical skills and tools to support you to have the confidence to have those important and sensitive discussions with your children/students/grandchildren to alleviate any concerns or anxiety that they may be feeling.

Our early intervention and client focused therapeutic counselling model helps to support children and families to nurture their inner strength and resilience. We welcome and encourage those within our community who would like support to contact us as soon as possible to organise your one hour support session to discuss how we can best help. If after your first hour you feel you would like further sessions or a session with your child, this is also possible at no charge and is something we can discuss at the completion of your first session.

FMHSS (across Salisbury and most Adelaide Metropolitan areas)

For further information please email [fmhss@baptistcaresa.org.au](mailto:fmhss@baptistcaresa.org.au) or if you prefer to talk to someone please call our Salisbury Office on 08 8209 5000 and ask to speak to one of the Leadership team for FMHSS.

## Shapes & Artwork—R3



## LEADERSHIP TEAM MEMBERS

Terena Pope, Kylie Tuckey, Wahid Halimee, Emma Voigt, Jenny Bartold

Dear Families,

To say that we are living in unique times is an understatement! As we are starting to take the tentative steps back to life as we knew it, the school continues to be guided by the health advice and follows the recommendations on social distancing and hygiene practices in our classrooms and play spaces. A reminder that parents are not to enter buildings unless this has been pre arranged with staff and are to minimise the time spent on school grounds as the safety and wellbeing of our students, staff and community continues as a priority. If you are needing to communicate with staff, please use SeeSaw or arrange to connect via a phone call.

Given the low rates of the virus in our state, families have been encouraged to send their children to school from the start of this term.

As we are now in a fortunate situation with the majority of our students back at school and the lifting of some public restrictions, our teachers and students have been able to return to face to face learning at school.

From Monday 18 May face to face teaching will be the main platform for learning programs. This will mean that the teachers' primary responsibility will be to deliver and manage a full learning program for students at school.

We respect that some students will continue to learn from home due to health or family circumstances and we will ensure that they are supported.

For classes with larger numbers of students still learning at home, teachers will provide some learning tasks which can be complimented by the Education SA learning resources found on the Education Department website.

It will then be the parent's responsibility to manage the learning program at home. On the Education Department website, you will also find an "Advice for Families" page and resources are also available to support families who are choosing to continue their child's learning at home during this health crisis.

I ask home school students and their families to be aware that teachers first responsibility will be to the students present in their classes at school and that they will respond to and follow up with additional support for home-based students when it is practically possible. See Saw will continue to be used by all teachers to support school—home communication.

We seek your patience and understanding.

I would again like to thank our families for their understanding and support over these past weeks with the dual delivery of a home and school learning program for our students. Your support and commitment to working with the school during this challenging time has been appreciated.

Regards,

Terena Pope

## DIARY DATES

Term 2

### SCHOOL CARD

Applications for 2020 School Card are to be completed online this year. An information sheet is available from the school office.

### PAYMENTS

Invoices for school fees have been posted to families. Please note we are not currently accepting cash payments.

### OSHC

Director: Jo Battersby 0418 585 142

Before school care: 7am-8.30am

After school care: 3pm-6pm

Vac Care/Pupil Free Days: 7am-6pm

1 Renown Place, Clovelly Park SA 5042

Phone: (08) 8276 5366

Fax: (08) 8374 3301

Email: [dl.0932\\_admin@schools.sa.edu.au](mailto:dl.0932_admin@schools.sa.edu.au)

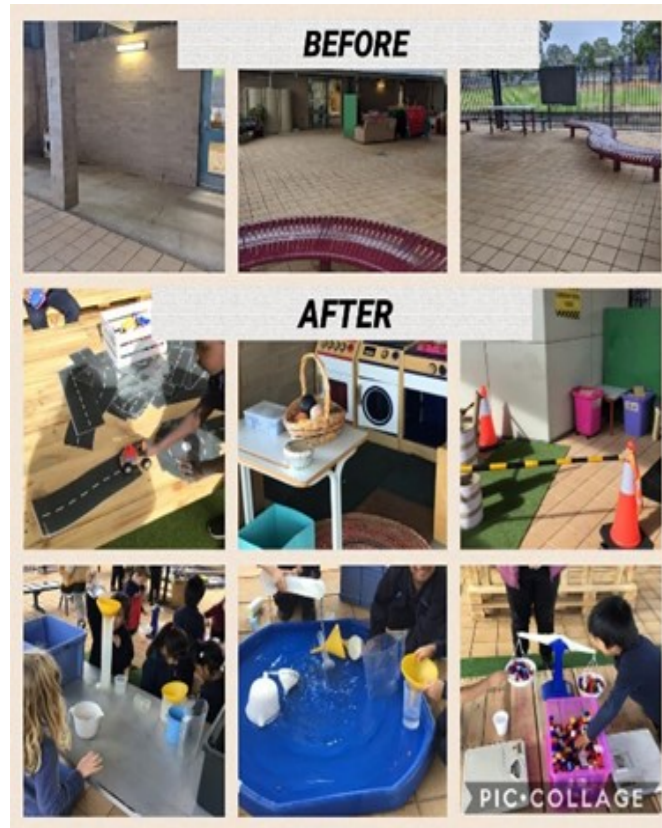
Website: [www.clovellyps.sa.edu.au](http://www.clovellyps.sa.edu.au)



## COLA upgraded

After a busy school holidays the COLA has been revamped ready for Inquiry Based Learning. We have created a homely atmosphere with a home corner, construction area, sandpit, pallet tables/couches and more!

R4 and R5 have incorporated this space in their daily routine as a hands-on learning approach to their maths concept (measurement and capacity) and will soon introduce a Story Table to support their literacy program.



*Edwin: "I like the kitchen and having customers."*

*Lochy B: "I love playing with the water in the COLA!"*

*Caleb: "My favourite part of the COLA is playing with dinosaurs. ROAR!!"*

*Naa: "I love playing with the puppet theatre."*

## Hattie's Garden

Earlier this year Y6 and G1 hatched chickens in an incubator. They are now with a bantam mother who is teaching them how to be chickens. They are happily settling into the school henhouse and will stay in the house for a couple of weeks until they are too big to escape under the gate or through the fence. Then we will let them have daytime access into the yard. You are welcome to visit them in Hattie's Garden. The plastic rain cover over the door has little peep holes cut for you to look through.



## Keep Kids Safe

As many children are back at school now, please take care when driving around or near schools. The lower limit of 25km/h applies whenever children are in the school zone.

Koala Crossings consist of two yellow flashing lights mounted on red and white striped poles. They operate only when the yellow lights are flashing, and drivers *must* slow down to 25km/h and give way to *anyone* using the crossing or about to cross the road.



## Helping with reading at home

Are you confused about how to help your child with reading? Do you want to know how to best support your child with their reading progress at home?

**Please join us for a one-hour webinar which will provide:**

- The things I need to know about helping my child to read
- Helpful 'tips' for reading at home
- What to do in getting ready to listen to reading
- What to do before, during and after listening to reading.

*This session is suitable for parents of all primary-age children, from Foundation to Year 6.*

[http://info.cengage.com/parents\\_webinars?](http://info.cengage.com/parents_webinars?)

## Reading Resources

It is with great sadness that due to health and safety regulations related to COVID-19 we have temporarily closed our Resource Centre at School. The Resource Centre is always a hive of activity and much excitement as children pick their weekly stories and engage with their teacher to find out more about new literature and books.

Although the Resource Centre is not functioning as usual, class teachers have continued to share ideas on how to access reading materials. Each class teacher has incorporated online materials in their flexible learning plans. You can access these resources regardless of your learning location.

In addition to these great resources, I highly recommend following Alison Lester (a well renowned Australian Author on Facebook). She is reading her stories and posting them daily on Facebook. Other pages to follow include:

## Reading Resources ...

Year 4-5

<https://www.storylineonline.net/>

Year 2 and 3

[Unite for Literacy – app](#)

Year 1-2

<https://classroommagazines.scholastic.com/support/learnathome/grades-1-2.html>

<https://iview.abc.net.au/channel/abc4kids>

<https://iview.abc.net.au/show/book-hungry-bears/series/0/video/ZW2042A006>

## OSHC Bookings

All OSHC and vacation care bookings need to be made directly through the OSHC service and not through the front administration office. Please contact Jo Battersby when booking your child/ children into **before** or **after** school care programs, as limited places are available. This will enable us to provide the correct staffing ratios when looking after your child.

OSHC staff follow strict hygiene protocols and surfaces are cleaned regularly to minimise any risks and social distancing is maintained.

Bookings can be made via mobile number **0418 585 142** or by email [Jo.Battersby849@schools.sa.edu.au](mailto:Jo.Battersby849@schools.sa.edu.au) Children not booked in will not be able to attend until a vacancy has been confirmed. We thank you for your ongoing cooperation.

## Healthy Food

This term in Health lessons we are learning about healthy foods. These were made by Lily (R1) and Rylan (G1) from one of the learning tasks in the home learning package.

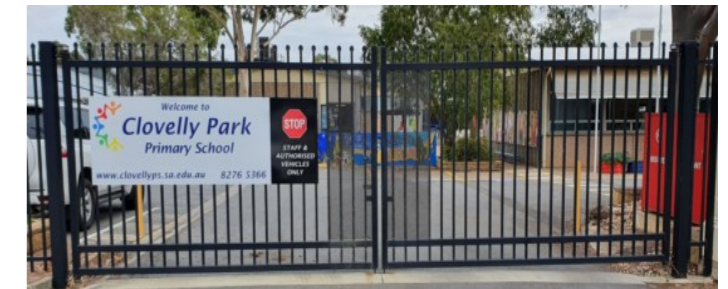


## Congratulations

Congratulations to Chloe on the arrival of little Archer! Everything is going well and both are very happy! We hope they enjoy their special time together and we look forward to seeing Chloe back with us in Term 4.



## Entering School



As more students return to school we remind parents that social distancing between adults is still expected. The only entrance to the school site continues to be the front gate. Parents are asked not to enter buildings and to minimise their time spent on site. If you need to enter the school outside of drop off and pick up times, please call the school office from the front gate and let us know.

We thank you for your ongoing cooperation at this time.

## Scholastic Book Club

To access Loop ordering, when placing your child's order, go to:

<https://mybookclubs.scholastic.com.au/Parent/Login.aspx>

Below is the link to our "virtual catalogue". This could be easily distributed to families (along with the loop link to place orders). Distribution of the catalogue to both children and parents is important in achieving the best level of engagement with book club.

[https://issuu.com/scholastic\\_australia/docs/aus\\_issue\\_3?fr=sMTQ2ZTEExOTgzNjE](https://issuu.com/scholastic_australia/docs/aus_issue_3?fr=sMTQ2ZTEExOTgzNjE)

## Book Club LOOP

LOGIN

## Uniforms

Our uniform shop is open Tuesday – Friday 9.00am-9.30am for purchases. Currently we have plenty of stock of the long sleeve fleece polo shirts for \$20.00.

